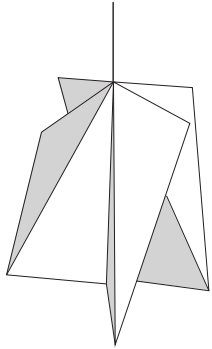


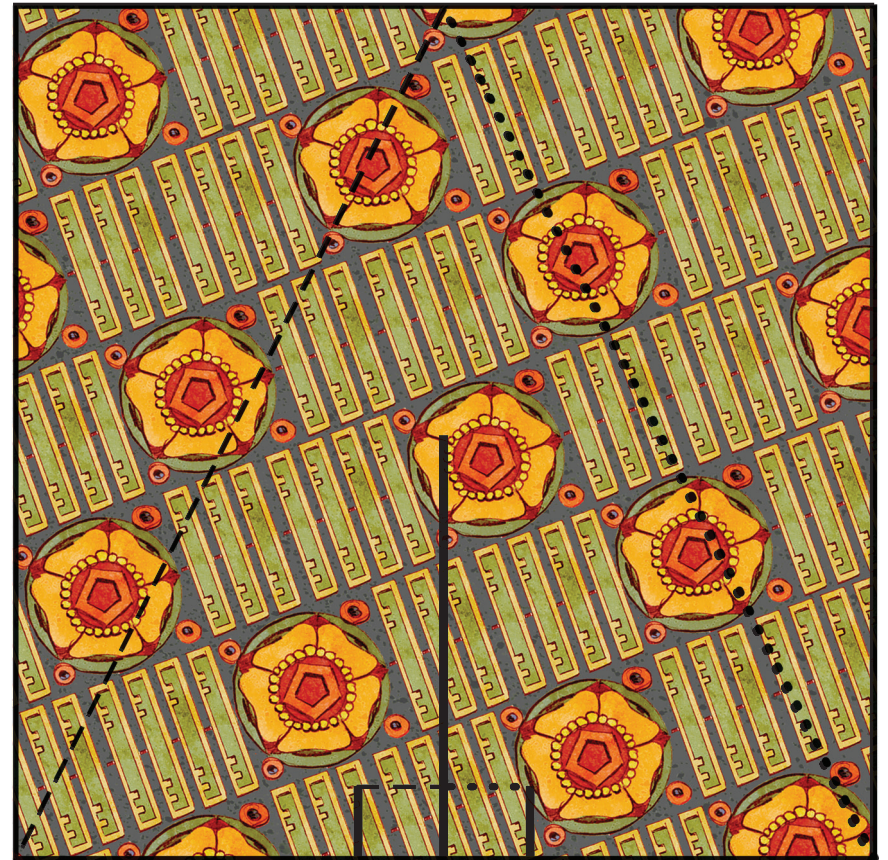
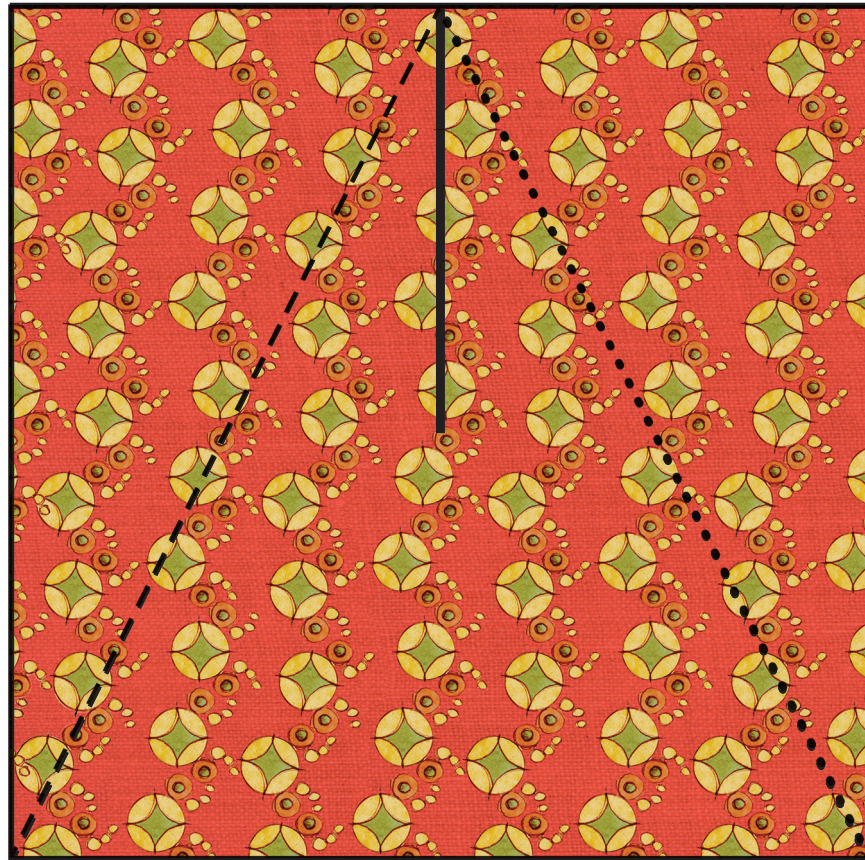
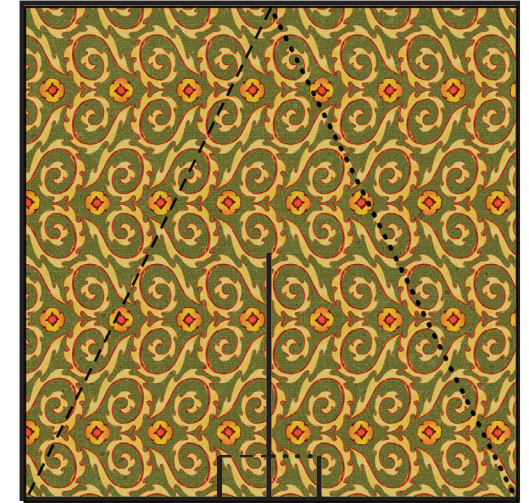
Spin Mills

Print and cut out the Spin Mills, fit slits A to B and C to D. Fold up the little base flaps to keep the right angles in place. Score and fold along the dashed and dotted lines.

Tie or tape a piece of thread to the top. The faster you walk with your Spin Mill the faster it will turn. Or you can hang them from a tree branch and watch them dance.



Tape thread here → C



Mountain Fold — — — — —
Valley Fold •••••

Fold Flaps up to keep right angles in place. → D