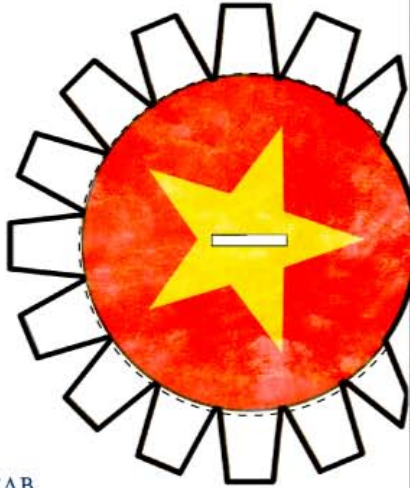


FOLD BACK EDGES AND GLUE

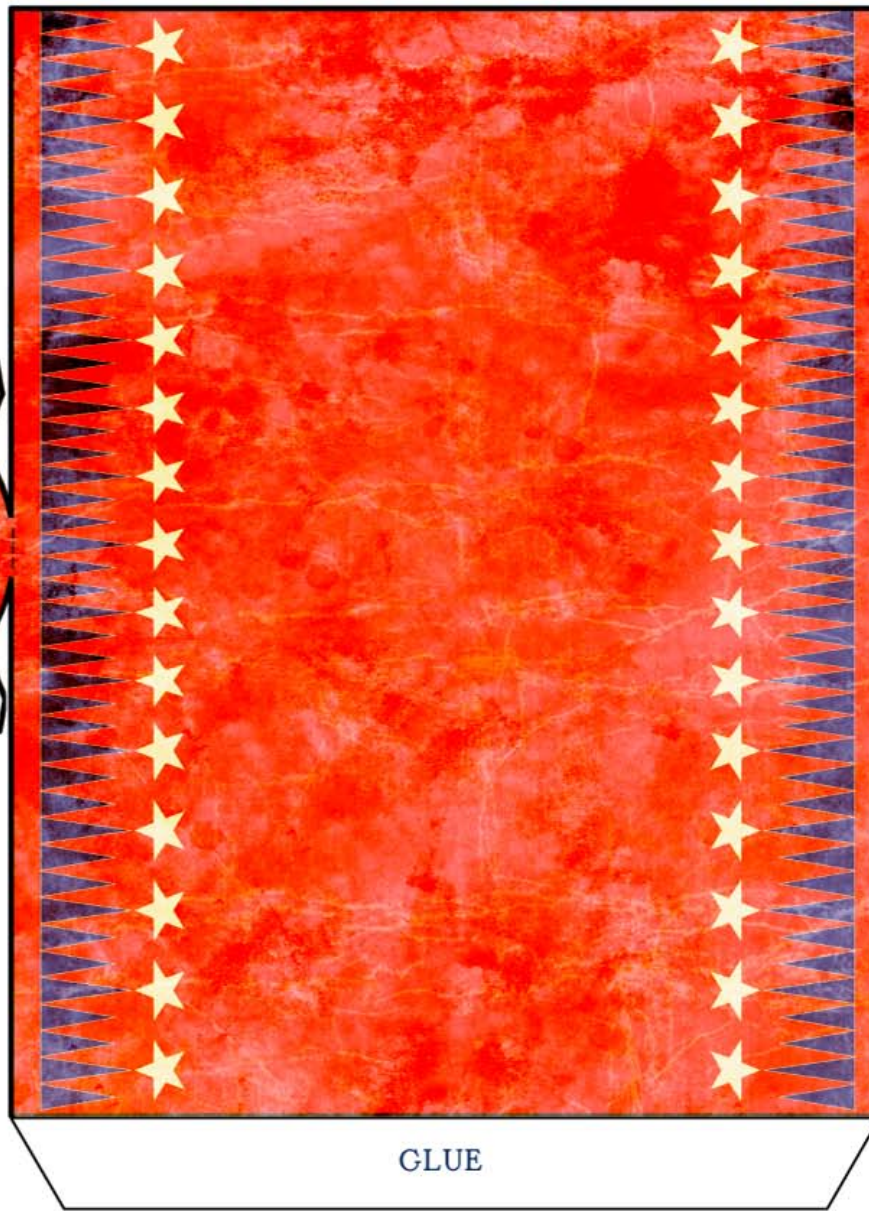
Fold and Glue



FOLD BACK SIDES OF TAB FIT THROUGH SLOT AND TAPE

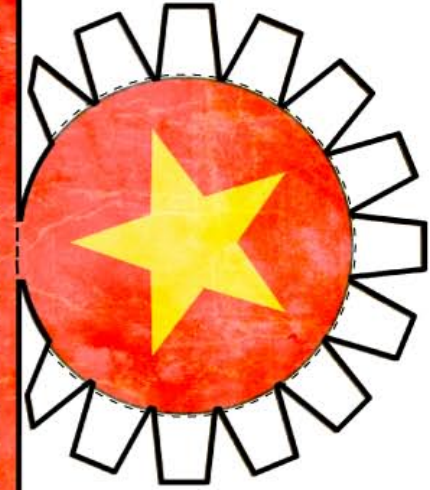
# Firecracker

Cutout and glue around a toilet paper roll. Add star and banner. Fill with candy. Enjoy.



GLUE

Fold and Glue



glue on front of Firecracker