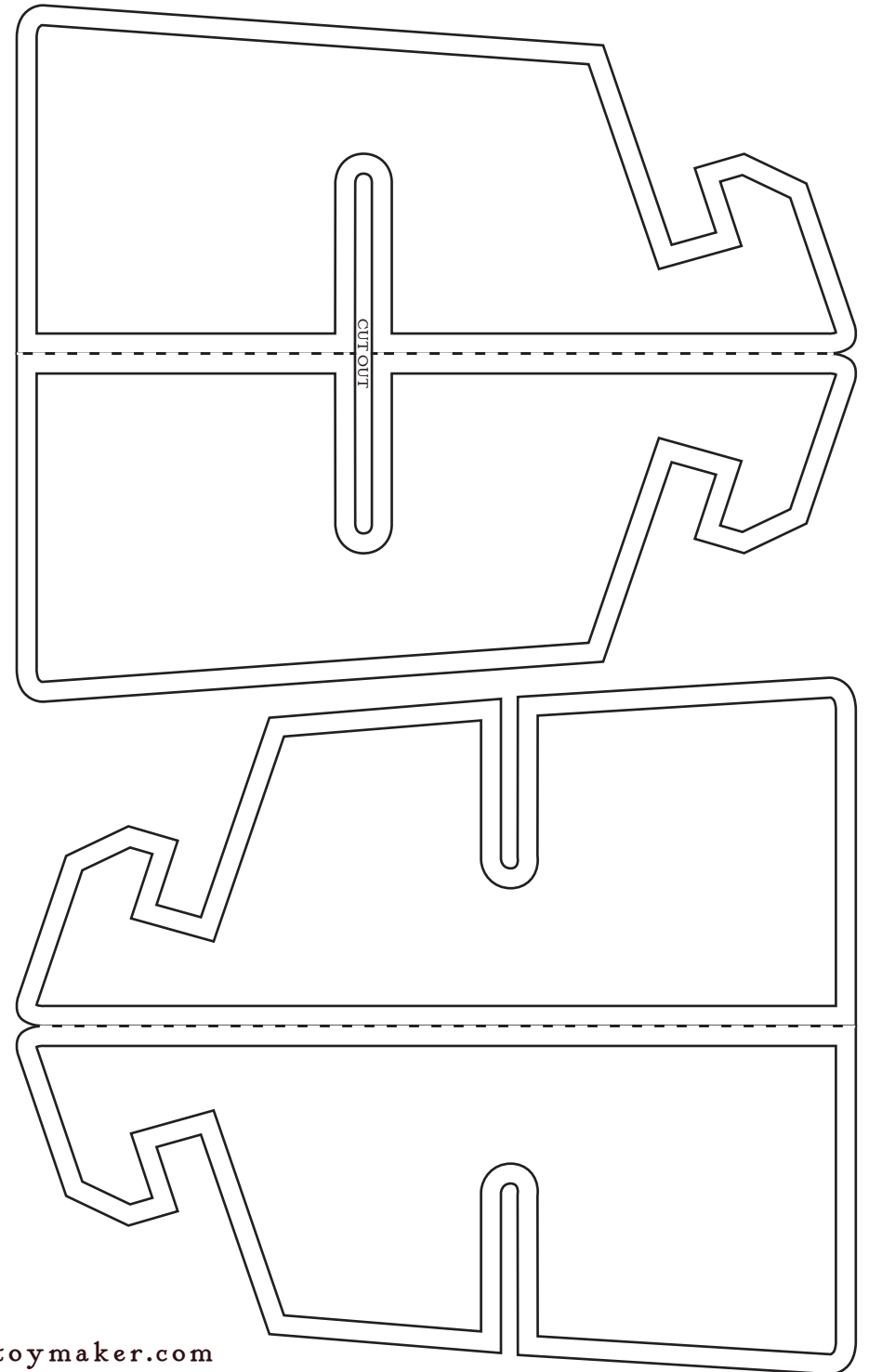
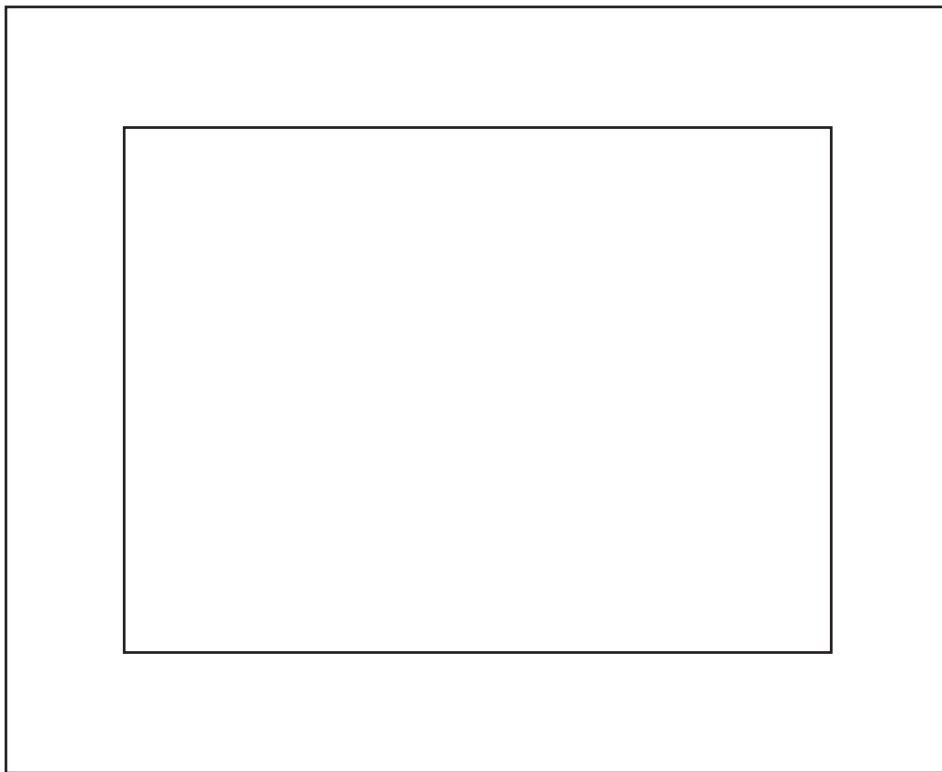
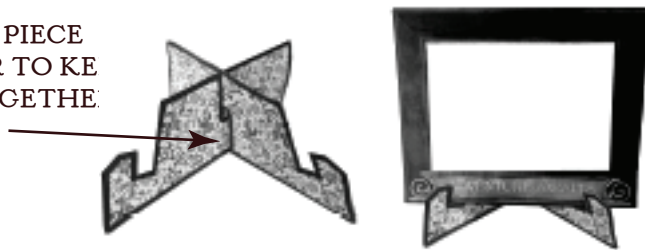


# A Paper Easel

Cut out the three pieces. Fold the two blue easel parts along the dotted line and glue the folded halves together. This will strengthen your easel.  
Fit the two pieces together to make an X shape.  
Your sailboat painting will fit nicely in the two notches in the front.



ADD A LITTLE PIECE  
OF TAPE HERE TO KE  
THE EASEL TOGETHE



To Amuse & Delight

©Marilyn Scott-Waters 2024 [www.thetoymaker.com](http://www.thetoymaker.com)